



# Integrated energy planning at district level

## Experiences of Multiply project

Zsófia Pej,  
pej@energiaklub.hu  
Energiaklub



## About MULTIPLY project

- Implementation: 2018-2022 in 6 countries
- Objective: improving climate mitigation efforts in municipalities through an integrated approach to urban development
- Method: P2P learning
- Web: <http://www.citiesmultiply.eu>
- Partners:



Deutsche Umwelthilfe

**POSAD MAXWAN**

strategy x design



Swedish Environmental  
Research Institute



**LEGAMBIENTE**



POLSKA SIEĆ  
Energie Citēs



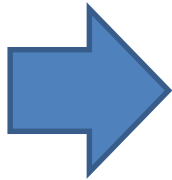
Climate Alliance  
Austria



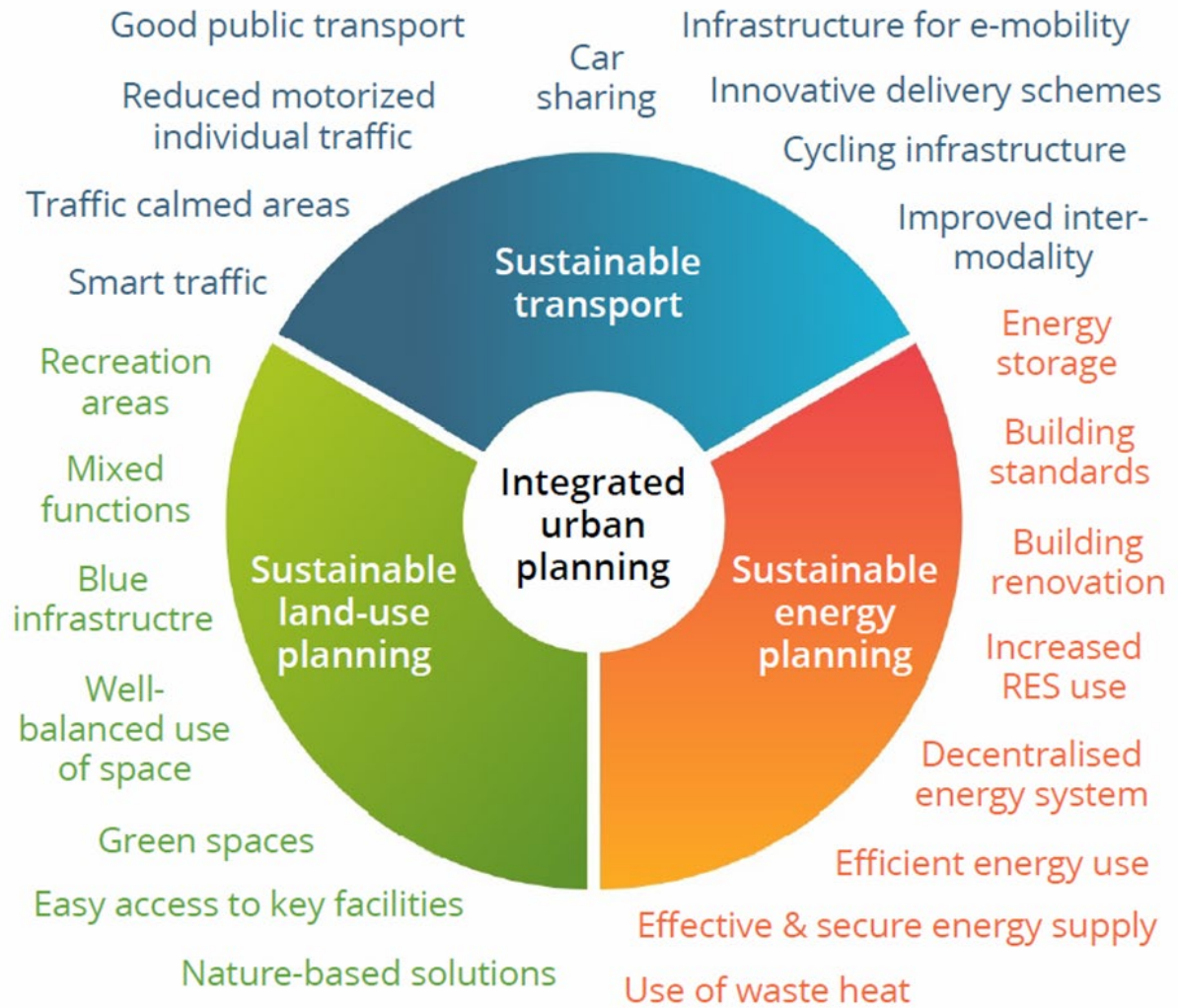
**ENERGIACLUB**

CLIMATE POLICY INSTITUTE  
APPLIED COMMUNICATIONS

# INTEGRATED URBAN PLANNING



Aims to maximise energy savings by combining aspects of sustainable transport, energy planning and land use



## Steps of MULTIPLY

1. Competition and selection of the participating municipalities



2. Workshop series

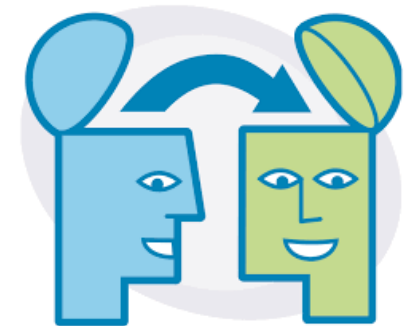


3. Elaboration of energy plans



4. Development of national and

international guidelines



5. Dissemination

# P2P workshop series

For 3 special  
groups



# The online exchange conference at Coperniko platform



## Lessons learnt in Hungary

- Not only the committed could learn from the forerunners
- Municipalities in general preferred to participate in workshops with all their team (not only the dedicated staff)
- Challenges
  - Municipalities' staff is very overwhelmed
  - At small settlements, the decision maker = technical staff = communication manager
  - At larger cities: decision makers are hard to engage

# Some photos





# Energy Plans <http://www.citiesmultiply.eu/en/energy-plans>

- 24 district level plans in the 6 participating countries
- District < 10.000 inhabitants
- Descriptive part
  - Baseline inventory,
  - vision, goals, measures,
  - financing strategy
  - communication strategy
- Calculation tool (Excel based)



# Overview of the Excel tool

CO <sub>2</sub> Emission targets (t CO <sub>2</sub> /a)	CO <sub>2</sub> Emission base year (free to choose, we suggest 2005) CO <sub>2</sub> emissions in t/a	CO <sub>2</sub> Emission Project start 2019 CO <sub>2</sub> emissions in t/a	CO <sub>2</sub> Emission Target year 2022 CO <sub>2</sub> emissions in t/a	CO <sub>2</sub> Emission Target year 2025 CO <sub>2</sub> emissions in t/a	CO <sub>2</sub> Emission Target year 2030 CO <sub>2</sub> emissions in t/a	CO <sub>2</sub> Emission Target (SECAP: 40% savings from 2005 to 2030) CO <sub>2</sub> emissions in t/a
Population (n° of inhabitants)						0
CO <sub>2</sub> Buildings, equip./fac. & ind. Heating	0	0	0	0	0	
CO <sub>2</sub> Buildings, equip./fac. & ind. Electricity	0	0	0	0	0	
Total CO <sub>2</sub> Buildings, equip./fac. & ind. Heating + Electricity	0	0	0	0	0	
CO <sub>2</sub> Mobility	0	0	0	0	0	
Total CO <sub>2</sub> emissions in t/a	0	0	0	0	0	0
CO <sub>2</sub> t/a per person	0,00	0,00	0,00	0,00	0,00	0,00
CO <sub>2</sub> reduction % t/a per person since 2005		0	0	0	0	40

Choose a base year

General information

Heating

Electricity

Mobility

Soft measures

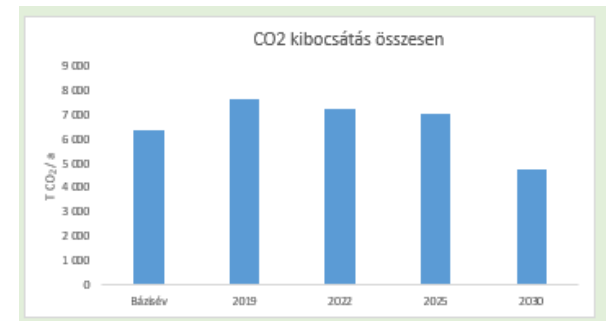
Budget plan

Report

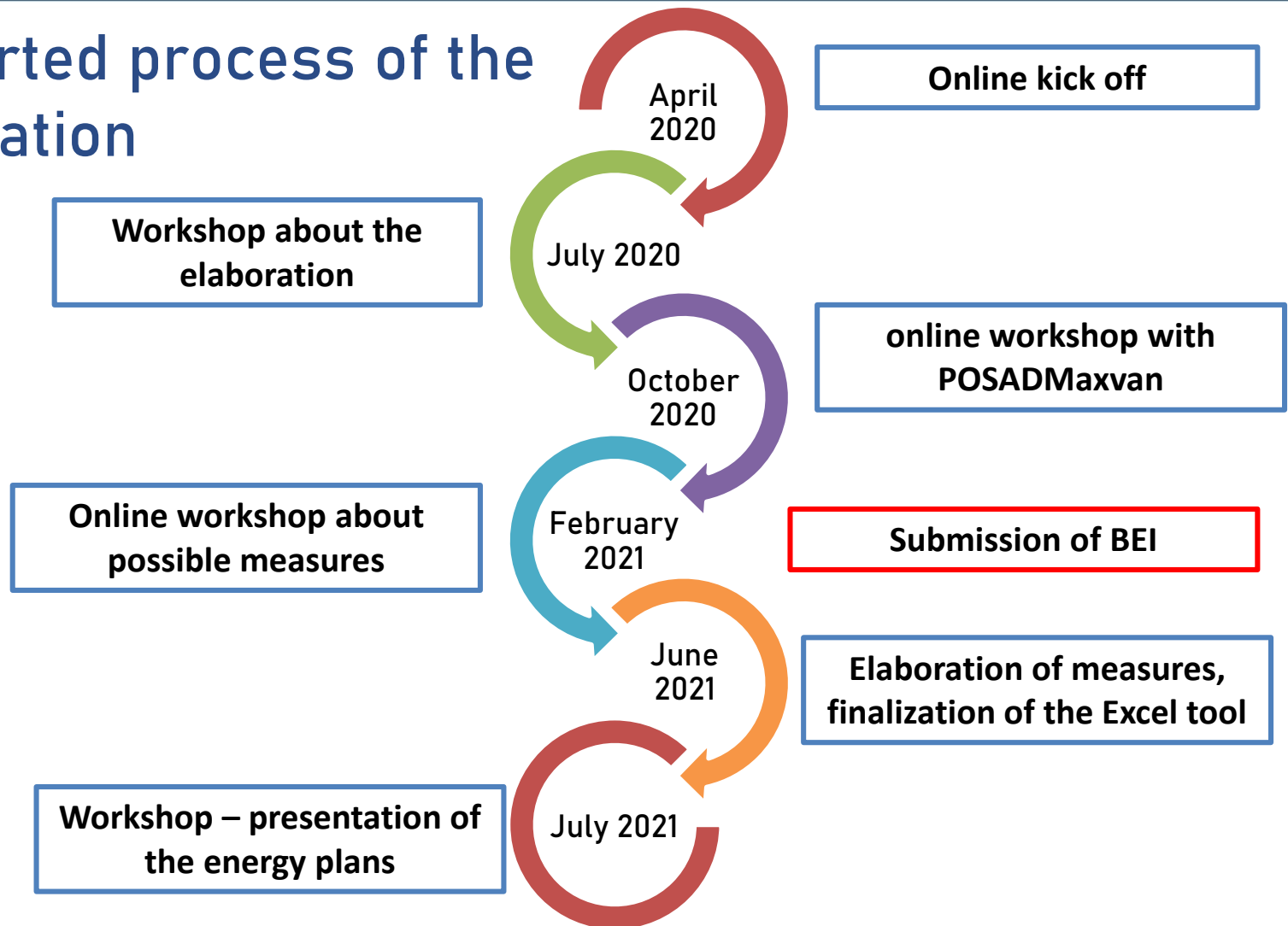


## Energy Plans <http://www.citiesmultiply.eu/en/energy-plans>

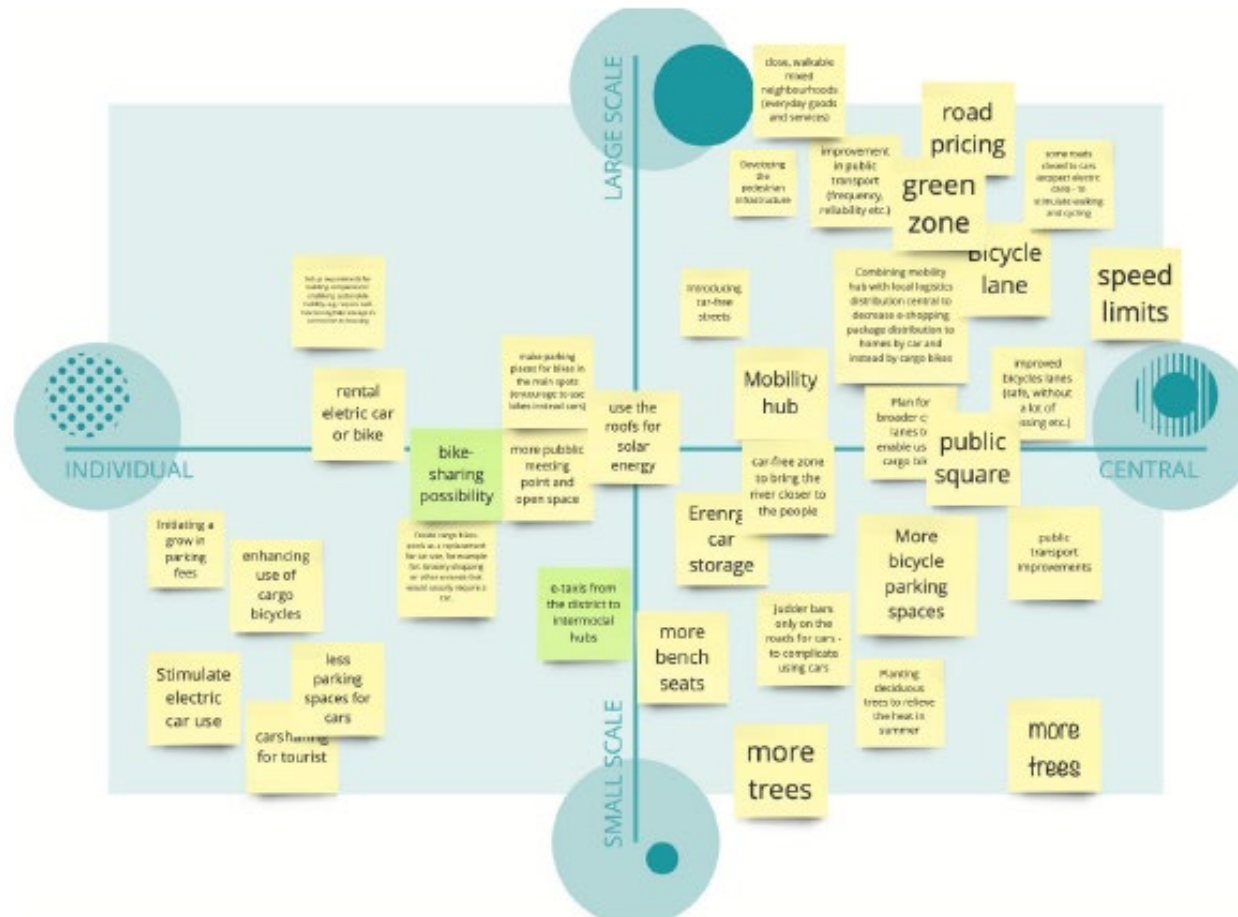
- Based on SECAP methodology
- Lots of predefined data
- Critical sectors (mobility, residential consumption) are simplified
  - Based on the number of different consumers (buildings, cars)
  - And the number of inhabitants
- Budget plan sheet serve as a monitoring tool as well
- Report sheet consists of automatically created figures
  - Eg. on CO<sub>2</sub> emissions



# Supported process of the elaboration



# Integrated planning support - possibilities



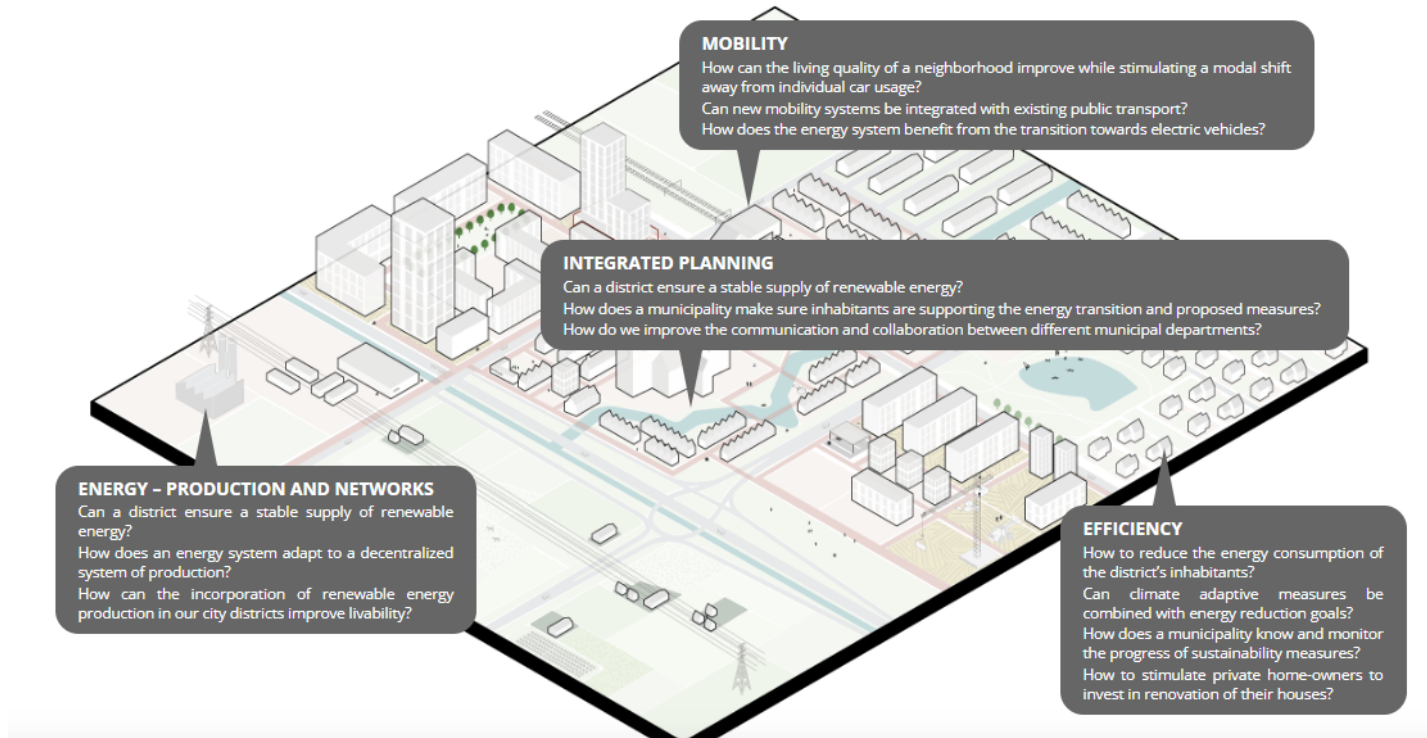
# Integrated planning support - scenarios



## Small scale – large scale interventions

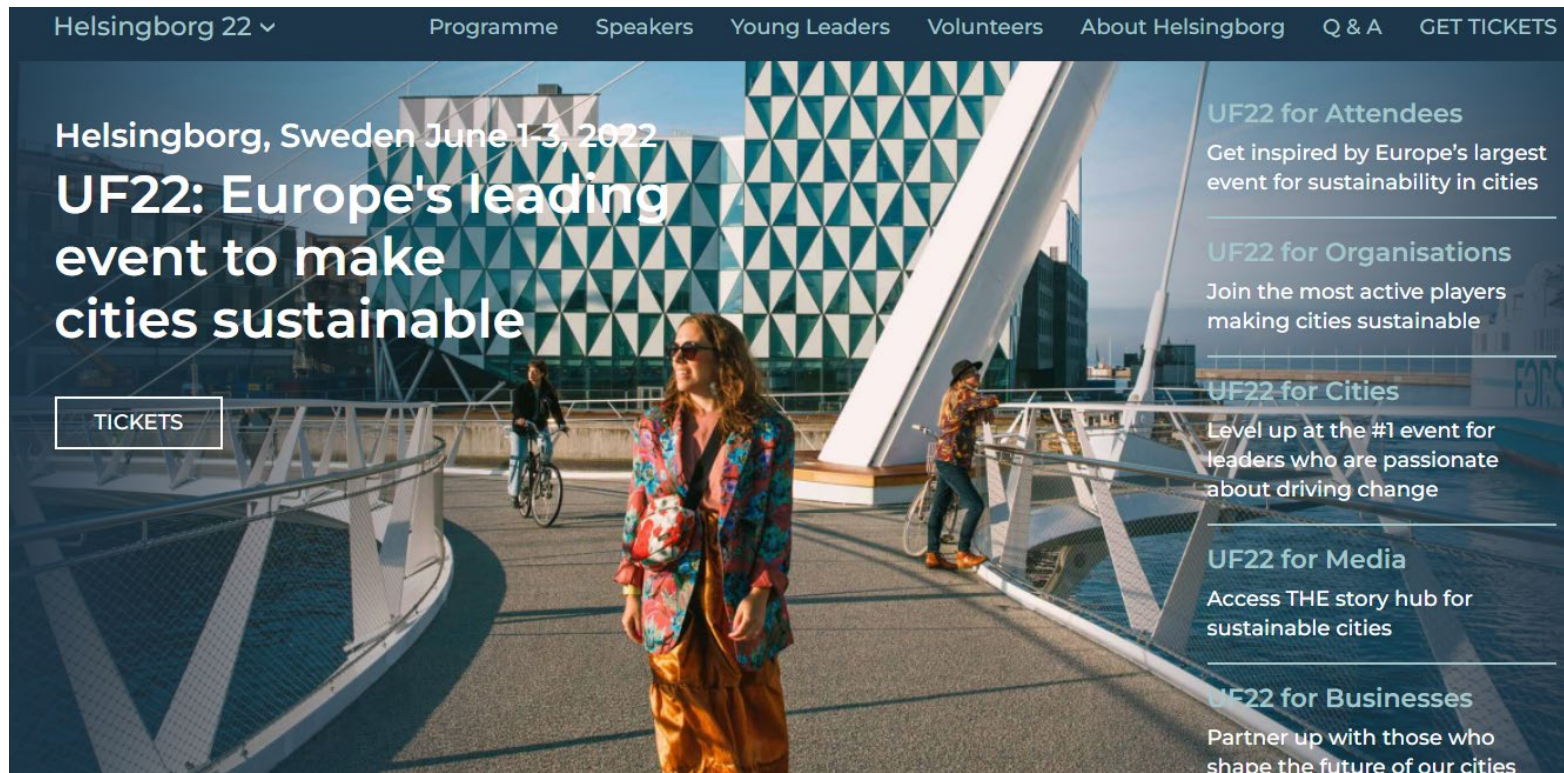
# European guideline <http://www.citiesmultiply.eu/en/challenges>

- CHALLENGES**
- EFFICIENCY**
- ENERGY PRODUCTION AND NETWORKS**
- MOBILITY**
- INTEGRATED PLANNING**



If you are interested...

## Let's meet at Urban Future Conference



The image shows a screenshot of the Urban Future Conference 2022 website. The background is a photograph of a woman in a colorful floral jacket and orange pants walking on a modern, white metal walkway overlooking a body of water. In the background, there is a building with a distinctive green and white geometric facade. The website layout includes a dark navigation bar at the top with the following items: 'Helsingborg 22' with a dropdown arrow, 'Programme', 'Speakers', 'Young Leaders', 'Volunteers', 'About Helsingborg', 'Q & A', and 'GET TICKETS'. The main content area features the text 'Helsingborg, Sweden June 1-3, 2022' and 'UF22: Europe's leading event to make cities sustainable' in large white font. A 'TICKETS' button is visible on the left. On the right side, there are four vertical sections, each with a title and a short description: 'UF22 for Attendees' (Get inspired by Europe's largest event for sustainability in cities), 'UF22 for Organisations' (Join the most active players making cities sustainable), 'UF22 for Cities' (Level up at the #1 event for leaders who are passionate about driving change), and 'UF22 for Media' (Access THE story hub for sustainable cities). A fifth section, 'UF22 for Businesses' (Partner up with those who shape the future of our cities), is partially visible at the bottom right.

Helsingborg 22 ▾ Programme Speakers Young Leaders Volunteers About Helsingborg Q & A GET TICKETS

Helsingborg, Sweden June 1-3, 2022

# UF22: Europe's leading event to make cities sustainable

TICKETS

**UF22 for Attendees**  
Get inspired by Europe's largest event for sustainability in cities

**UF22 for Organisations**  
Join the most active players making cities sustainable

**UF22 for Cities**  
Level up at the #1 event for leaders who are passionate about driving change

**UF22 for Media**  
Access THE story hub for sustainable cities

**UF22 for Businesses**  
Partner up with those who shape the future of our cities



# THANK YOU FOR YOUR ATTENTION!

Zsófia Pej, [pej@energiaklub.hu](mailto:pej@energiaklub.hu)



**POSAD MAXWAN**  
strategy x design



Swedish Environmental  
Research Institute



**LEGAMBIENTE**



**ENERGIAKLUB**  
CLIMATE POLICY INSTITUTE  
APPLIED COMMUNICATIONS